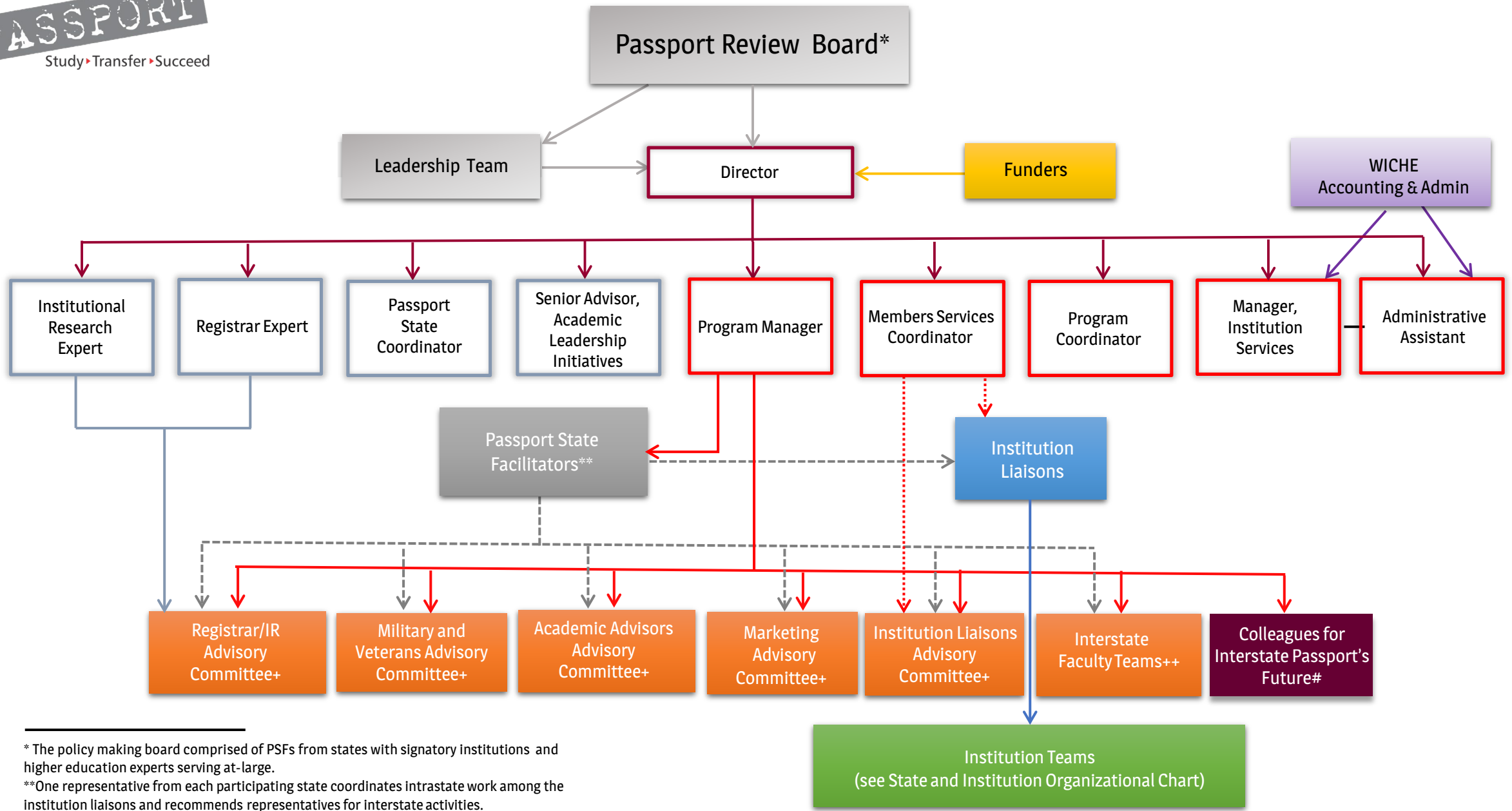


Interstate Passport Network



* The policy making board comprised of PSFs from states with signatory institutions and higher education experts serving at-large.
 **One representative from each participating state coordinates intrastate work among the institution liaisons and recommends representatives for interstate activities.
 +Comprised of representatives from Network member institutions, selected by their state's PSF based upon recommendation by Institution Liaison.
 ++There are nine faculty teams, one for each of the knowledge and skill areas. Each team consists of representatives from member institutions, selected by their state's PSF upon recommendation by institution liaison.
 # An advisory group of nationally recognized leaders in postsecondary education.